

Operating Instructions

Parts List



Super Loaded Hand Pallet Truck

Note: Operator MUST read and understand this operating instructions before use this Hand Pallet Truck.

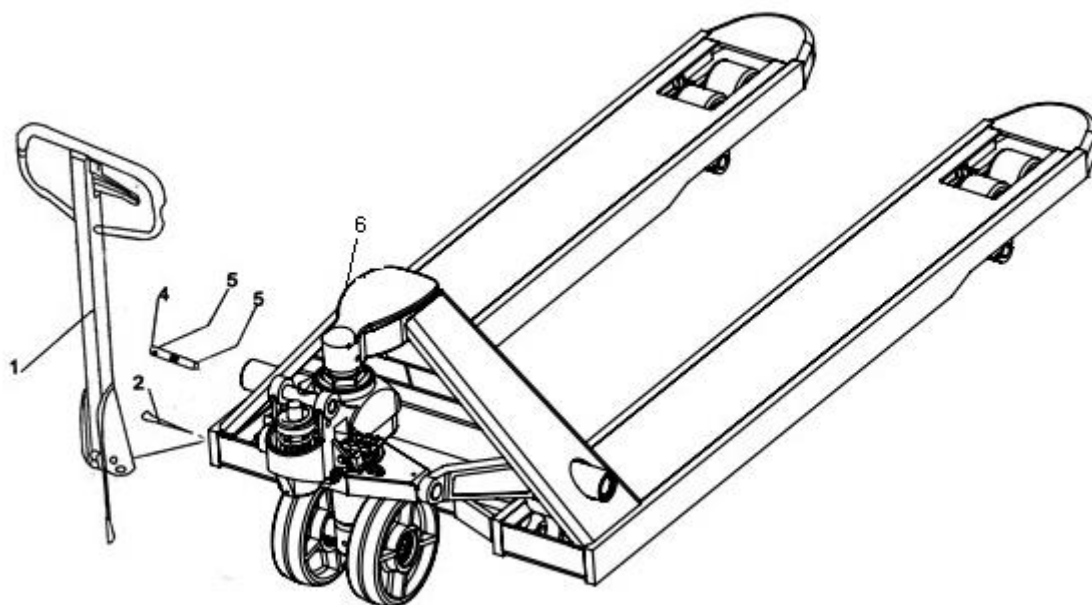
Thank you for using our pallet truck. Your pallet truck is made of high quality steel and is designed for the horizontal lifting and transport of loads on a pallet or standardized containers on a level, fixed base. For your safety and correct operation, please carefully read this instruction before using it.

1. GENERAL SPECIFICATIONS

Capacity	(kg)	5000
Max.Fork Height	(mm)	185
Min. Fork Height	(mm)	85
Fork Length	(mm)	1100/1150/1220
Width Overall Forks	(mm)	550/685
Individual Fork Width	(mm)	180
Wheels Material		Nylon/Iron

2. TO ATTACH DRAW-BAR TO PUMP UNIT

If you have purchased a wooden box of pallet truck, some assembly is required. Certainly, you need some tools, a hammer, a pliers, a spanner, etc; and some parts, one axle with hole (W105), two elastic pins (W106)(Note one is in the axle (W105)), these parts are putted in a plastic bag, which is putted into the draw-bar.



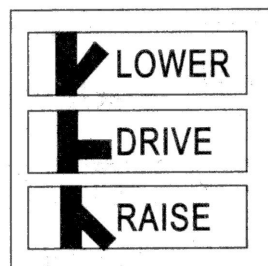
1. Draw-bar 2. Pin 4. Axle with hole 5. Elastic pin 6. Fork frame

Fig. 1

- 2.1. Insert the draw-bar onto the pump piston (W362), then use a hammer to insert the axle with hole (W105) into the hydraulic pump and draw-bar **from the right to left**. [note: let the perforated pin shaft center hole is “ \ ” and elastic pin hole on your]With the pliers and a hammer spring pin (W106) type shaft (W105).
- 2.2 .Then pressed the handle, remove the pin 2 (see figure 1).
- 2.3 .Let the adjusting bolt (W103) adjusting nut (W104) and the chain (W102) through the shaft center hole (W105), then lift the unloading board (W341), the adjusting bolt (W103) in its front end groove, let the adjusting nut (W104) on the unloading plate (W342) bottom. Then the handle will be installed on the pump body.

3. TO ADJUST RELEASE DEVICE

On the draw-bar of this pallet truck, you can find the control handle(W117) which can be regulated in three positions :



If however they have been changed, you can adjust according to following step:

- 3.1.If the forks elevate while pumping in the **DRIVE** position, turn the adjusting nut (W104) on the adjusting bolt(W103) clockwise until pumping action does not raise the forks and the **DRIVE** position functions properly.
- 3.2.If the forks descend while pumping in the **DRIVE** position, turn the nut(W104) counter-clockwise until the forks do not lower.
- 3.3.If the forks do not descent when the control handle (W117) is in the **LOWER** position, turn the nut(W104) clockwise until raising the control handle(W117) lowers the forks. Then check the **DRIVE** position according to item 3.1 and 3.2 to be sure the nut (W104) is in the proper position.

4. MAINTENANCE

4.1 OIL

Please check the oil level every six months. The oil can be hydraulic oil: ISO VG32, its viscosity should be 30cSt at 40° C, total volume is about 0.42lt.

4.2 TO BANISH THE AIR

The air may come into the hydraulic oil because of transportation or pump in upset position. It can cause that the forks do not elevate while pumping in the **RAISE** position. The air can be removed in the following way: let the control handle (W117) on the **LOWER** position, then move the draw-bar(W110) up and down for several times.

4.3 DAILY CHECK AND MAINTENANCE

Daily check of the pallet truck can limit wear as much as possible. Special attention should be paid to the wheels, the axles, as thread, rags, etc. It may block the wheels. The forks should be unloaded and lowered in the lowest position when the job is over.

4.4 LUBRICATION

All bearings and shafts are provided with long-life grease at the factory. You only need provide with long-life grease at monthly intervals or after each time the truck is cleaned thoroughly to the lubrication points.

5 GUIDE TO SAFETY OPERATION

- 5.1 Operator should read all warning signs and instructions here and on the pallet truck before using this truck.
- 5.2 Do not use on a slopping ground.
- 5.3 Do not operate a pallet truck unless you are familiar with it and have been trained or authorized to do so.
- 5.4 Do not operate a pallet truck unless you have checked its condition. Give special attention to the wheels or rollers, the draw-bar unit, the fork unit, the lever plate, etc. .
- 5.5 To pull the truck, always move the control handle into the drive position. This makes the draw-bar easier to move and depressurizes the pump section of the hydraulics. This preserves the hydraulic seals and the valve components. A long service life can be expected.
- 5.6 Do not take up any people on the pallet truck.
- 5.7 The operator had better take on gloves for labor protecting.
- 5.8 When the goods have been transported, all people should be away from the forks for 600mm.
- 5.9 Do not load goods.
- 5.10 Do not load over maximum capacity.
- 5.11 At others special condition or place, the operator should be carefully to operate the pallet truck.

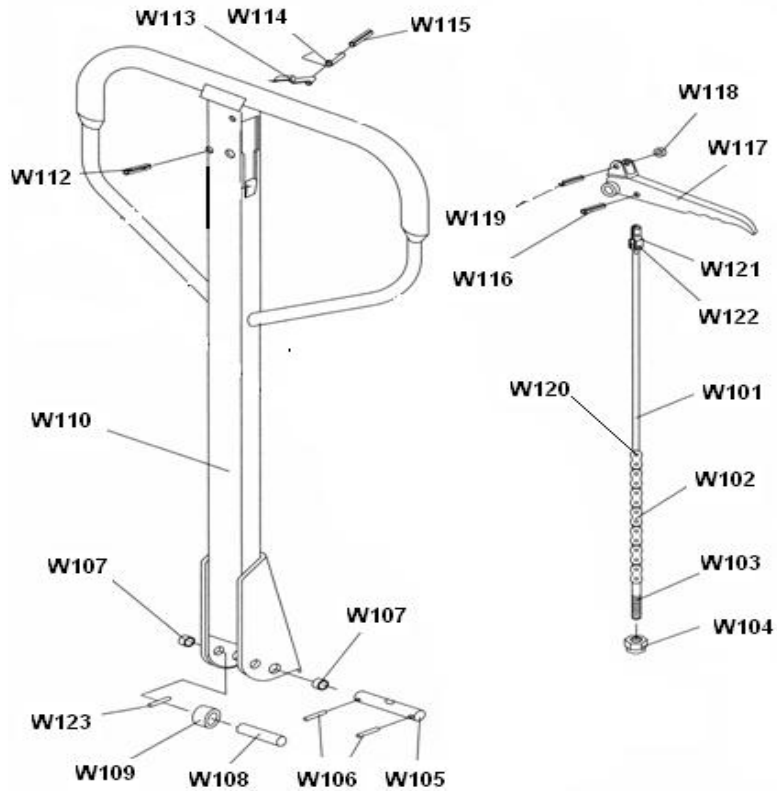
6 TROUBLES SHOOTING

No	Trouble	Clause	Fixing Methods
1	The forks can not be up the max. height.	-The hydraulic oil is not enough.	-Pour in the oil.
2	The forks can not be lifted up.	-Without hydraulic oil. -The oil has impurities. -The nut (W114) is too high, keep the pumping valve open. -Air come into the hydraulic oil.	-Fill in the oil. -Change the oil. -Adjust the nut(W104). -Banish the air.
3	The forks can not be descended.	-The piston rod or pump body is deformed resulting from piston rod or partial loading slanting to one side or over-loading. -The fork was kept in the high position for long time with piston rod bared to arise in rusting and jamming of the rod. -The adjusting nut (W114) is not in correct position.	-Replace the piston rod (W351) or pump (W361). -Keeping the fork in the lowest position if not using, and pay more attention to lubricate the rod. -Adjust the nut (W104) .
4	Leaks	-Sealing parts worn or damaged. -Some part cracked or worn into small.	-Replace with the new one. -Replace with the new one.
5	The fork descends without the release valve worked.	- Due to the placement of the goods to one side or overload, making the piston rod (W351) or small pump core (W361) damage. -Fork in a higher position for a long time, make piston show rust, blocking the piston movement. -The adjusting nut (W104) is not in the correct position.	-Replace with new oil. -Banish the air. -Adjusting the nut (W104).

NOTE: DO NOT ATTEMPT TO REPAIR THE PALLET TRUCK UNLESS YOU ARE TRAINED AND

AUTHORIZED TO DO SO.

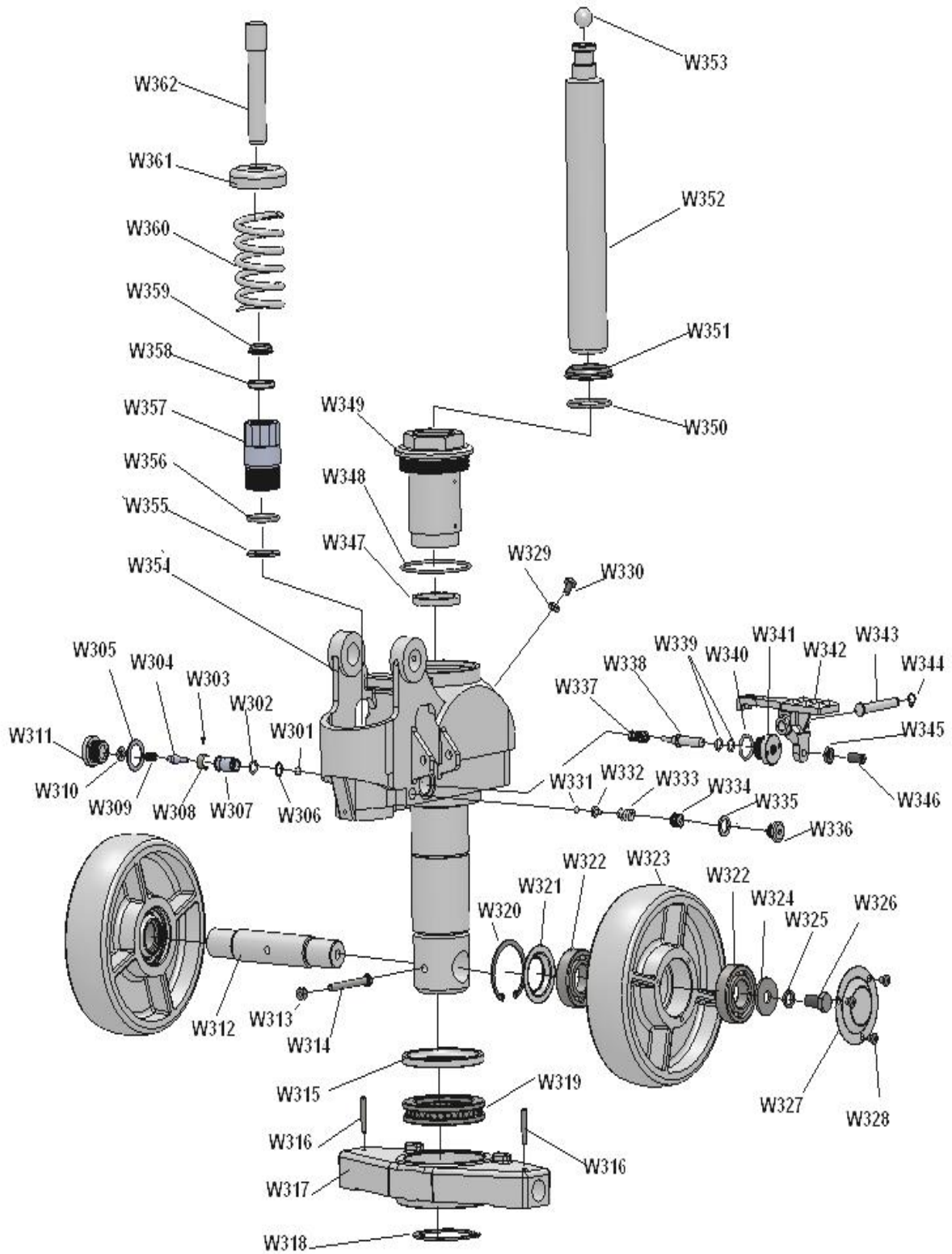
DRAW-BAR



LIST OF DRAW-BAR

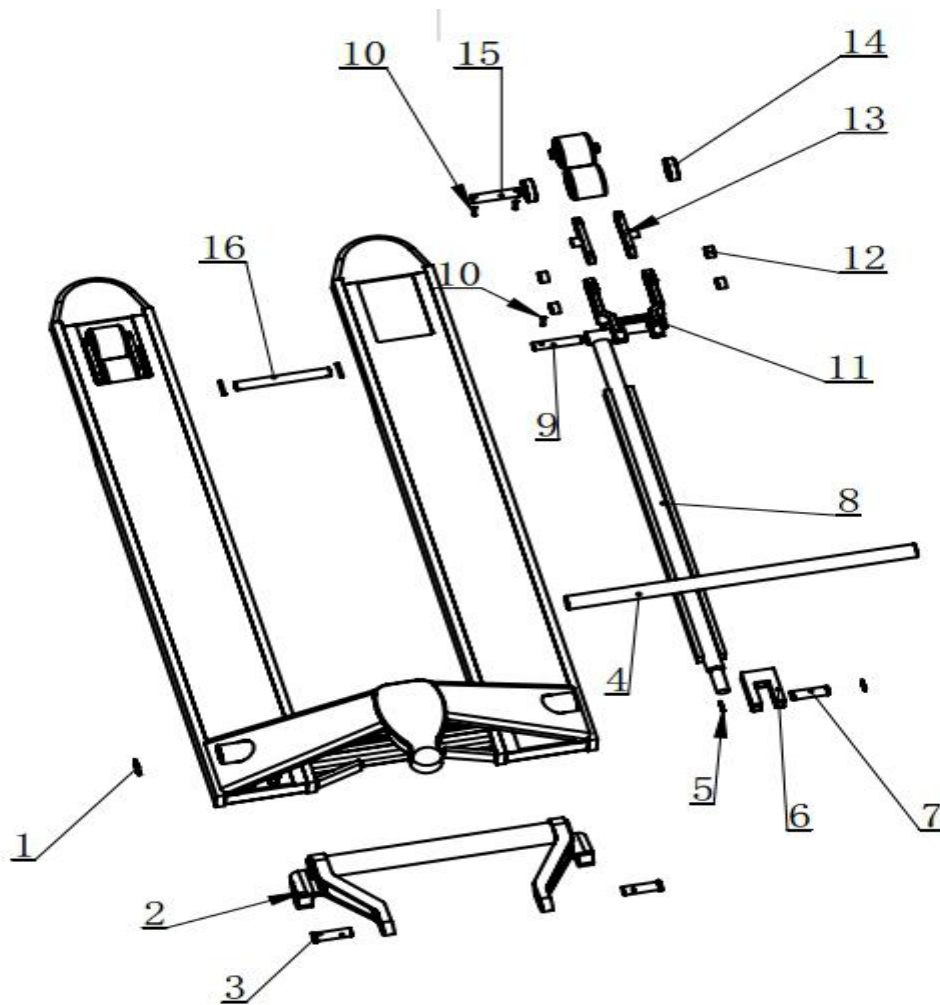
No.	Description	Qty.	No.	Description	Qty.
W101	Release Rod	1	W113	Blade Spring	1
W102	Chain	1	W114	Spring	1
W103	Adjusting Bolt	1	W115	Elastic Pin	1
W104	Adjusting Nut	1	W116	Elastic Pin	1
W105	Axle with Hole	1	W117	Control Handle	1
W106	Elastic Pin	2	W118	Roller	1
W107	Bushing	2	W119	Elastic Pin	1
W108	Roller shaft	1	W120	Pin	1
W109	Roller	1	W121	Pull Board	1
W110	Draw-bar	1	W122	Pin	1
W112	Elastic Pin	1	W123	Elastic Pin	1

HYDRAULIC PUMP



LIST OF HYDRAULIC PUMP

No	Description	Qty.	No	Description	Qty.	No	Description	Qty.
W301	Steel Ball	1	W322	Bearing	4	W343	Pin	1
W302	O-Ring	1	W323	Loading Wheel	2	W344	Retaining Ring	1
W303	Screw Plug	1	W324	Bearing	2	W345	Nut	1
W304	Valve Core	1	W325	spring washer	2	W346	Screw Plug	1
W305	Seal Washer	1	W326	Screw Plug	2	W347	Seal	1
W306	Seal Washer	1	W327	Dust Cover	2	W348	O-Ring	1
W307	Seat of pumping valve	1	W328	Screw Plug	6	W349	Nut	1
W308	coach spring	1	W329	Seal Washer	1	W350	O-Ring	1
W309	Spring	1	W330	Screw Plug	1	W351	Spring Cap	1
W310	Bearing	1	W331	Steel Ball	1	W352	Piston Rod	1
W311	Axle Sleeve	1	W332	Spindle of Safety Valve	1	W353	Steel Ball	1
W312	Shaft of Loading Wheel	1	W333	Spring	1	W354	Pump Body Shell	1
W313	Nut	1	W334	Screw Plug	1	W355	Seal Washer	1
W314	Bolt	1	W335	Seal Washer	1	W356	O-Ring	1
W315	Bearing	1	W336	Bolt	1	W357	Pump Body	1
W316	Elastic Pin	2	W337	Spring	1	W358	Seal	1
W317	Thrust Plate	1	W338	Strike pin	1	W359	Dust Ring	1
W318	Retaining Ring	1	W339	O-Ring	2	W360	Spring	1
W319	Bearing	1	W340	O-Ring	1	W361	Spring Cap	1
W320	Retaining Ring	2	W341	Axle Sleeve	1	W362	Pump Piston	1
W321	Dust Cover	2	W342	Lever Plate	1			



THE BODY OF FORK

LIST OF THE FORK

1	Retaining Ring	2	9	Shaft	2
2	Rook-Arm	1	10	Elastic Pin	16
3	Pin	2	11	Frame Of Fork Wheel	2
4	Long Shaft	1	12	Steel Bushing	8
5	Retaining Ring	4	13	Rocker	2
6	Connecting Base	2	14	Bearing	8
7	Short Shaft	2	15	Shaft For Fork Wheel	4
8	Straight Tappet	2	16	Shaft	2